

PAARAgraphs



Celebrating 65 years as an active ham radio club—Since 1937
Newsletter for the Palo Alto Amateur Radio Association, Inc.



CALENDAR

- April.....5, **PAARA Meeting, 7:30**
Menlo Park Recreation Center
700 Alma Street, Menlo Park
- April.....10, **PAARA Board Meeting, 7:30**
Red Cross Bld., 400 Mitchell Ln., Palo Alto
- May.....3, **PAARA Meeting, 7:30**
- May.....8, **PAARA Board Meeting, 7:30**
- June.....7, **PAARA Meeting, 7:30**
- June.....12, **PAARA Board Meeting, 7:30**

The ARRL has a code practice:
URL <http://www.pcpractice.com/CW/>
-Don KF6JMQ

PROGRAM

April 5, 2002 7:30 P.M.

*Electcraft
owners on
their new 100W*

Speaker: *KZ*



(Program unknown at press time)

Join us for pre-meeting eyeball

at Su Hong Restaurant, 1039 El Camino Real, Menlo Park
Food will be served at 6:00 sharp, so guests will be on time for the PAARA meeting. Those arriving late will be responsible for their own order and bill.

—PAARA Radio NET every Monday evening at 8:30 P.M., local time—
on the 145.230 -600 MHz repeater, PL tone off

Newsletter article about other problems facing hams in cooler climates. I know the people that use these towers.

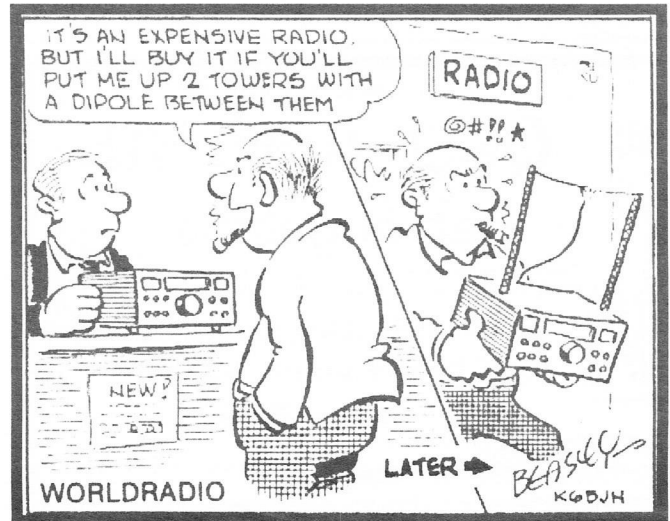
Howard

COOL TOWERS

Last holiday season I went to N.E. Oregon (Pendleton) for a three week visit with the family. My brother is also a Ham so I also belong to the local Ham Club there and have met and talked with most of the locals who are active in the club. After a recent storm they noticed that one of their most popular repeaters was off the air along with another repeater having degraded performance and the Packet Node was down too. They decided to make a visit to the Repeater Site which in December requires a lengthy trip by Snowmobile. Three snowmobiles and 4-5 people made the trip. We make all kinds of complaints about tower problems and wind loading of our antennas here in mostly sunny California. Take a trip to the following web site and see what a little Ice and Snow Storm can do when added to some high winds. The Tower shown is Rohn 45 which is pretty substantial. Especially when the only antennas on it were Verticals. Look at all the photos as there are several comments made about this tower and the other Repeater Tower in the background.

See photos at: <http://www.digitalhams.com/spout/>
The Repeater location is near Tollgate, Oregon.

-Howard Califf, KE6PWH



Miscellaneous Dates

ELECTRONIC FLEA MARKET

Second Saturday of month, March-October, 6 AM-2PM

PAARA Palo Alto Amateur Radio Association

meets 1st Friday 7:30 each month, Net 145.230 each Monday 8:30,
contact: Andreas Junge N6NU.....(650) 233 0843

FARS Foothills Amateur Radio Society

meets 4th Friday 7:30 each month,
contact: Sheldon Edelman N6RD, 650 493 7212, n6rd@earthlink.net

NCDXC Northern California DX Club

meets 2nd Friday 7:30 each month, repeater for member info 147.360, Thur 8:00PM,
contact: Bob Mammarella KB6FEC 408 729 1544.

NorCalQRP Northern California QRP Club

meets 1st Sunday each month,
contact: Jim Cates 3241 Eastwood Rd., Sacramento, CA 95821.

Perham Foundation

contact: (408) 734 4453,

SPECS Southern Peninsula Emergency Communication System

meets each Monday 8:00PM on Net 145.27, 440.80 MHz, www.specsnet.org
contact: Tom Cascone, KF6LWZ, 650-688-0441 specs@sypal.org

SCARES South County Amateur Radio Emergency Service

meets 3rd Thursday 7:30 each month, San Carlos City Hall.
Net is on 146.445 [PL 114.8] & 444.50 (PL-100) 7:30 Monday evenings.
contact:

SCCARRA Santa Clara County Amateur Radio Association

Operates W6UU repeater 146.385+ Nets: 2m, W6UU, 7:30 Mon; 10m,
28.385, 8:00 Thur. meets 2nd Mon each month.
contact: Jack Ruckman AC6FU

SVECS Silicon Valley Emergency Communications

Operates WB6ADZ repeater (146.115 MHz+)
contact: Lou Stierer WA6QYS 408 241 7999

WVARA West Valley Amateur Radio Association

operates W6PIY repeater 147.39+, 223.96, 441.875, 1286.2
meets 3rd Wed every month.
contact: Glen Lokke Jr. KE6NBO at 408 971 8626, or gllokke@pacbell.net

Disaster Services

PALO ALTO CHAPTER, American Red Cross, www.paarc.org

400 Mitchell Lane
Meets 3rd Wed. each month 7:30PM,
HF, packet, BBS, ATV, OSCAR Gateway, NASA satellite
contact: Mac Millian 650-688-0423. MACM@paarc.org

SAN JOSE CHAPTER, American Red Cross

contact: Scott Hensley KB6UOO, (408) 967 7924, FSHENSLEY@NOVELL.COM

VE Exams, 3rd Saturday each month, 10:30AM, 145.23- PL=100Hz

Redwood City Main Library, Community Conference Room
1044 Middlefield Road, Redwood City, CA
contact: Al WB6IMX@att.net.

Swap meet, LosPositas College, Livermore, 1st Sunday each month.

Contact: Cliff Kibbe (209) 835 6715 or Eliot Ross (925) 606 7710

(please send changes to PAARAgaphs editor: k6uro@arrl.net)

Palo Alto Amateur Radio Association, Inc.

PO Box 911

Menlo Park, CA 94026

President	Vacant
Vice President	Andreas Junge N6NU.....(650) 233 0843 n6nu@arrl.net
Secretary	Jay Melvin, WA6SBO.....(650) 726 4361 wa6sbo@arrl.net
Treasurer	Bob Korte, KD6KYT.....(650) 595 1842 RGK4U@aol.com
Membership.....	Vic Black, AB6SO.....(650) 366 0636 ab6so@smrn.com
W6OTX Station Trustee..	Gerry Tucker, N6NV.....(650) 326 4908
K6YQT Station Trustee..	Gerry Tucker, N6NV.....(650) 326 4908
Property.....	Gerry Tucker, N6NV.....(650) 326 4908
Badges.....	Don Trask, KF6JMQ.....(408) 251 6494
ARES Officer.....	Lily Anne Hillis, N6PGM(650) 325 5484
Club Historian	Vacant?
Advertising.....	Bob Korte, KD6KYT.....(650) 595 1842
Webmaster	Andreas Junge N6NU.....(650) 233 0843 n6nu@arrl.net

Board of Directors

Joel Wilhite, KA7TXV	(650) 325 8239 '03
ka7txv@qsl.net	
Gerry Tucker, N6NV	(650) 326 4908 '03
tucker.gerry@ssd.loral.com	
Rolf Klibo, N6NFI	'03
Jim Rice, K6AK	'03

(see "Calendar" for Board meeting times, visitors welcome)

PAARAgaphs Staff

Editor.....	Wally Porter, K6URO.....(650) 494 7038 k6uro@arrl.net
Database.....	Don Trask, KF6JMQ.....(408) 251 6494 kf6jmq@arrl.net
Columns.....	Vic Black, AB6SO.....(650) 366 0636 ab6so@smrn.com

PAARAgaphs e-mail address: k6uro@arrl.net

Submit material for PAARAgaphs by the 15th

Use WORD, rich text, ascii, .pub, .ps, or .jpg,

PAARA Website <http://www.qsl.net/paara/>

Join us for pre-meeting eyeball

QSO April 5th

gab & gobble

Food will be served at 6:00 sharp, so guests will be on time for the PAARA meeting. Those arriving late will be responsible for their own order and bill.

6 pm— at Su Hong Restaurant
1039 El Camino Real
Menlo Park

—across from Kepler's Book Store—

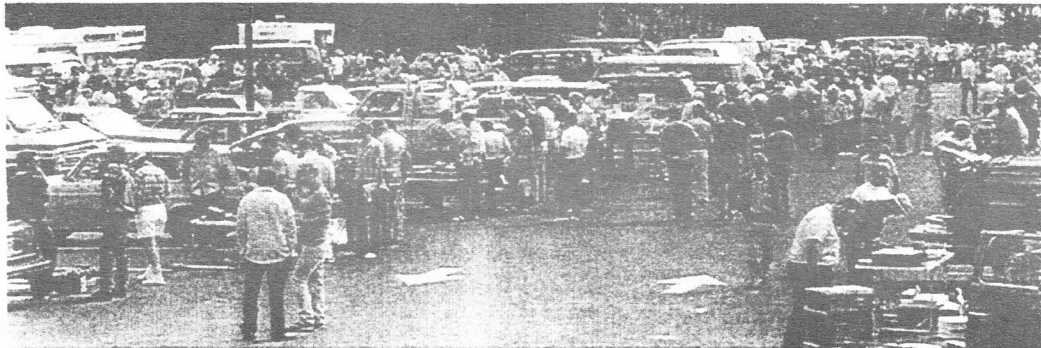


UNDERSTAND YOU PEOPLE ARE LOOKING FOR A LITTLE ENFORCEMENT ON SOME OF THE BANDS

Northern California's Largest Electronics Flea Market

Continuing Under Perham Foundation Sponsorship in 2002

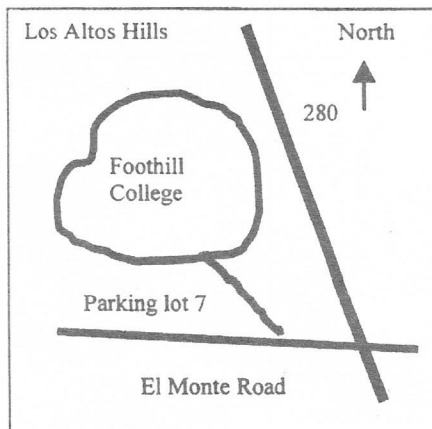
408/734-4453(phone) 408/736-2685(fax)



- ★ Come to Parking lot 7 (formerly parking lot A or F) Foothill College, Los Altos Hills
- ★ Second Saturday of the month, March – October, 6 AM – 2 PM
- ★ Sellers: \$15.00 per Vehicle (2 parking spaces)
- ★ All appropriate taxes must be remitted to the State Board of Equalization
- ★ BUYERS FREE!!! (but bring 8 quarters for the College parking fee)
- ★ Support your local non –profit electronics organization
- ★ Refreshments provided by beneficiary organization

NOTE: All Campus parking rules enforced. Please park legally, between marked lines only! Do not park where there are no lines

Locator Map:



Date	Beneficiary Organization
March 9	South Peninsula Amateur Radio Klub (SPARK)
April 13	Santa Clara County Amateur Radio Association (SCCARA)
May 11	South Peninsula Emergency Communications System (SPECS)
June 8	Foothill Amateur Radio Society (FARS)
July 13	Silicon Valley Emergency Communications System (SVECS)
August 10	West Valley Amateur Radio Association (WVARA)
September 14	Palo Alto Chapter, American Red Cross
October 12	Palo Alto Amateur Radio Association (PAARA)

NEED MORE INFORMATION?

Call on the SPECS repeater (145.27 MHZ-), phone Perham Foundation at (408) 734-4453, or contact the Rick Joslin website at <http://www.electronicfleamarket.com>.

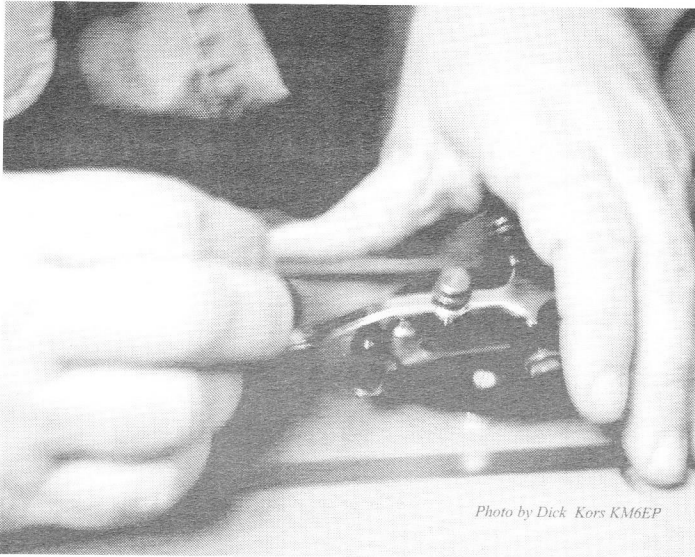


Photo by Dick Kors KM6EP

Da-Di-DA-Dit



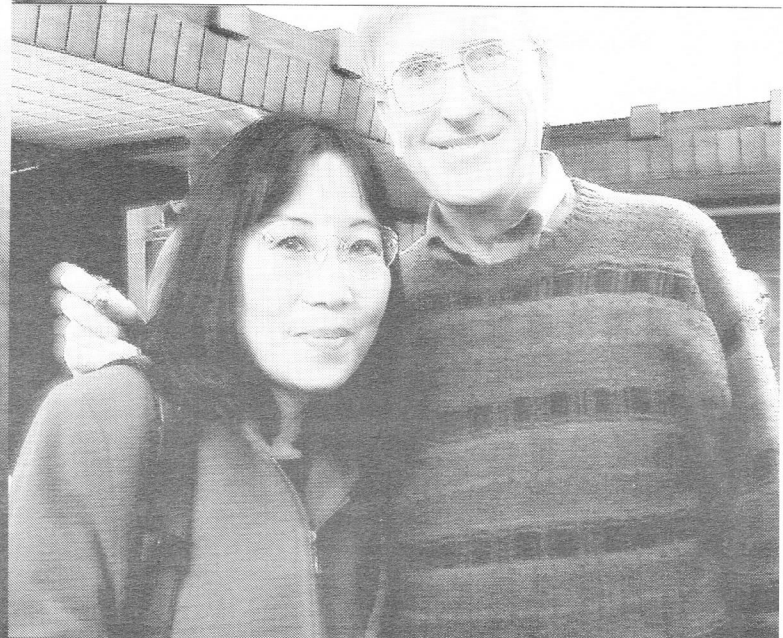
Photo by Dick Kors KM6EP

It's That Way



Photo by Dick Kors KM6EP

The Reader



Happy Hams

Practice Helps!

Author: Rob Carr N3RTR

There's a rule in public safety about emergency and disaster operations: You do in a disaster what you do every other day. I've been in enough emergencies and disasters to vouch for this rule. During a disaster, you don't have time to pull out the disaster plan. You don't even have time to sit back and try to remember what the disaster plan is supposed to be. You simply do whatever you do every day, only a lot quicker and with fewer rest breaks. I believe this applies to amateur radio as well. If you don't use proper radio procedure when you're talking on the repeater, you're not likely to use it when you're in an emergency response. If you don't handle radiograms now and then, you'll have trouble doing it when "The Big One" hits. If you're not used to running (or even checking into) a directed net, you're much more likely to cause disruptions to a directed net during an emergency. If you want to be ready for emergencies:

1. Always use good radio procedure, even during drive-home QSOs on the local repeater.
2. Hop onto a traffic net now and then and handle some traffic. This means sending traffic now and again. The traffic pads from the ARRL are helpful, but they're even better if you've had practice using them!
3. Check into nets - informal and directed. Act as NCS on a directed net when you get the chance (but let others have a shot, too!).
4. Help out with the non-emergency amateur radio events. Pittsburgh EMS regularly uses the Pittsburgh Marathon as "practice" for a disaster, and I believe that the amateur radio operators who work that (and other events) are much better prepared for a disaster as well.
5. Field Day and contests can be used as a way to "shake down" your system. I hilltop during a lot of VHF contests so that my equipment will work if I have to "hilltop" during a disaster.

Reprint via Rich, W6APZ

BADGES

There a few BADGES ready
If you ordered one contact Don Trask KF6JMQat
next PAARA meeting or kf6jmq@arrl.net

PAARA Radio NET

every Monday evening
8:30 P.M., local time
on the
145.230 -600 MHz repeater

PL tone off



HSC

Halted
specialties co.

Electronics • Prototyping Supplies • Computers • Lasers

Debra Blanke
Sales

KG6UI

3500 RYDER STREET
SANTA CLARA, CA 95051
www.halted.com

PHONES: (408) 732-1573
(650) 969-1448
FAX: (408) 732-6428

PAARAgaphs Ad Rates

PAARAgaphs accepts paid advertisements from non-members.
(short personal ads remain free for members in good standing).
All ad rates listed are per issue only.

1. Not for profit ads by association members for ham-related items and wants. No cost for business card size ads (additional space at \$2.50 per business card size).
2. For Profit organizations and/or individuals: \$5-business card size, \$25-half page, \$50 full page or back cover.

These fees may be reduced or waived in exchange for a valuable consideration that is given to the Association or its general membership. Such consideration must be in addition to any existing arrangements with the association.

The PAARAgaphs editors reserve the right to reject any ad deemed to be not in the best interest of the Association. All fees payable in advance by the year with "scanner-ready" copy or text-only ads. Give payment and copy to Bob Korte

PAARA • Palo Alto Amateur Radio Association • P.O. Box 911, Menlo Park, California 94026-0911

- Club meetings are on the first Friday of each month, 7:30pm at the Menlo Park Recreation Center, 700 Alma Street, Menlo Park, CA. •
 - Radio NET every Monday evening, at 8:30pm, on the 145.230-600 MHz repeater, PL tone off. •
- Membership in PAARA is \$12.00 per calendar year which includes a subscription to PAARAgaphs, \$6 for additional family members (no newsletter).
Make payment to the Palo Alto Amateur Radio Association.
Permission is granted to reprint from this publication with appropriate source credit.

Palo Alto Amateur Radio Association, Inc.
 PAARAgraphs Newsletter
 P.O. Box 911
 Menlo Park, California 94026



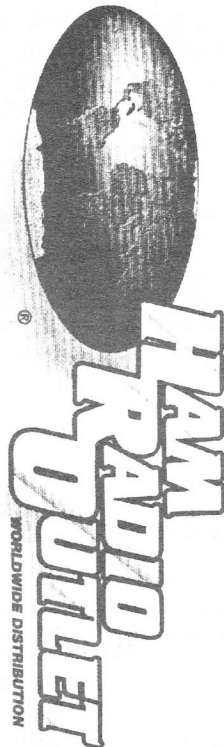
FIRST CLASS MAIL

65

Webb site for propagation information:
www.arrl.org/wlaw/prop/

Korsak, Andy KR6DD
 504 Lakemead Way
 Redwood City, CA 94062-3919

94062-3919 27



Call For Summertime Specials!



APRS
 TNC Framing
 TNC Built in

TH-D7A 2M/40
 • 2M/40 Dual Band
 • Built in 1200/9600 Band TNC
 • APRS Compatible
 • DX Packet Cluster Monitor
 • 1000 Memory Channels
 • VCH - Message by Channel
 Call Now For Low Pricing!

VC-H1
 Visual Communication
 Compatible with FM VHF/UHF
 Transceivers • HF SSB
 Send Rec Digital Images •
 (32 seconds) to remote
 Station • 100 Memory
 Stored Call T1 LCD Display
 1.8" • Built-in speaker • mic •
 Download to PC •
 (with special software)
 Call For Low Price!

TH-G7A 2m/40
 • 2m/40 Dual Band
 • 200 Memory • SC Programmable
 • 2m 5.5w UHF 21.3 WDC
 • Alphanumeric Display
 • C/CSS Built in • Backlit keypad
 Call For Low Price!

TH-22AT
 • 1000 Channels
 • 2M UHF 5.5w
 • 40 memories
 • Flexible Built-in
 High Power
 5W
 Auto Menu

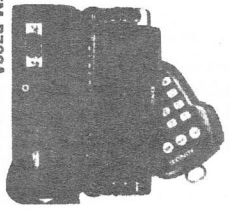


TM-V7A 2M/40MHz
 • 50W/35W • 280 Memory • Visual Scan
 • Alpha Numeric • Encoder & Decoder Built-in
 • Computer Programmable • 8000 Brand Head
 • Color Blue Reverse LCD • Serial Mic
 Call Now For Low Price!

TS-870S HF Transceiver
 • DSP in 1 F Stage • 100W 12V DC
 • Dual mode noise reduction
 • Digital Filtering (no opt. filters req.)
 • Built in RS232C Windows software incl

TM-261A 2M Mobile
 • 50W • Mid and Low • Multi-Spec
 • 61 Mem. Channel • Alpha Numeric Function
 • Dual Mem. DTMF Memory
 • Auto Tone • Color Encoder
 Call Now For Special Low Price!

TS-570DQ/TS-570SG DSP Enhanced
 • 100W HF • 100w on 6M • TS-570SD only
 • GSK • CW Auto Tune • Auto-tune and 6M
 • DSP • Large LCD Display • Back. Keypad
 • RPT? Radio Control Program Compatible
 Call Now For Your Low Price!



TM-D700A 2M/40 Dualband
 • 50W VHF 25W UHF • 600 Voice Synthesizer
 • 1000 Memory • 1000 Channels (not included)
 • Remote head (not included)
 • 200 Memories • Built in 1200/9600 band TNC
 • Advanced APRS Features
 • DX Packet Cluster
 • Tone Scan • GPS/VCH-HPF Ports



TS-50S HF Transceiver
 • TS-50S World's smallest HF trans.
 • SSB CW AM FM • 10V Gen Cov. RX
 • 6.4 lbs. 7.16 x 2.4 x 9.37" • 100W out
 • 105 db dynamic range 100 Mem.
 • Opt. ext. ant. tuners available
 Call For Special Low Price!

TM742AD 2M/40QRP
 • Optional 3rd band available • Backlit mic
 • Up to 300 memories • 101 per band
 • P1-Encoder built in • (Inchacable from panel)
 Call Now For Your Low Price!