

March

1987

P A A R A

GRAPHS

Featuring:

The F.C.C. has enhanced the novice and technician licenses: articles will appear in next month's issue. The second part of the networking article, more of interest . . . ➔



**THE OFFICIAL NEWSLETTER
OF THE PALO ALTO AMATEUR
RADIO ASSOCIATION**

AND

THE MENLO PARK C.D. AMATEUR RADIO CLUB

1987 Club Officers

President	Gerald Tucker	WA6LNV	326-4908
Vice-President	Andy Korsak	VE3FZK	366-5228
Secretary	Bill King	N6CHI	595-0258
Treasurer	Frank Chandler	WB6QPV	322-7678
Trustee, W60TX	Fred Canham	K6YT	948-9238
Property	Ed Fairbanks	W6AIN	322-0319
Co-Property/Badges	Fred Canham	K6YT	948-9238
Refreshments	Frank Chandler	WB6QPV	322-7678
ARES Officer	Steve Stuntz	K6FS	322-4952
Club Historian	Jerry Zobel	W6ARA	322-0063

Board of Directors

Craig Smith	N6ITW	1987-8	326-8637
Ron Panton	W6VG	1987-8	854-4814
Gerry Wagstaffe	W6NIR	1985-6	325-4814
John Buonocore	KD6ZL	1986-7	366-1658
Micheal Bach	WB6FFC	1986-7	592-2710
Perry Yelton	WR6E	1987-8	366-9481

PAARAgaphs Staff

Editor	Kenneth Dueker	KB6BPM	322-6984
Associate Editor	????????????????	????????	???-????
Advertising	Swede Swenson	N6CHL	368-9808
Mailing	Bill McElhinney	KA6LZI	325-9808

And a few anonymous, but *very* important publication people!

PAARA Policies

Membership in PAARA is \$6.00 per calender year which includes a subscription to *PAARAgaphs*. Make payment to the Palo Alto Amateur Radio Association, P.O. Box 911, Menlo Park, CA 94026

Club Net on 147.45 MHz Mondays at 8:30 P.M.

Meetings monthly at the Menlo Park Recreation Center at 7:30 P.M., the first Friday of the month.

March

1987

From the Editor's Desk:

Here's some information which may interest you from WA6LJ:

Freebie Time Selector. If it is 0900 in San Francisco, what time is it in Sydney, Hong Kong or London? Call AT&T's International Caller Club at 1-800-443-5550 and ask for AT&T's "International Time Wheel". It is a free circular slide rule for determining time in other time zones.

Santa Claus has a home. On December 17, 1986 I had a pleasant QSO with OH9LA, Veli Lehto in Rovaniemi, Finland on 20 meters. Several days later I read an article in the newspaper that Rovaaniemi had been declared the official home of Santa Claus and, furthermore, Santa has a radio station. I sent the article to Veli and in the return mail I received his QSL card and that of Santa, OH9SCL ("SCL" for Santa Claus Land), SCL-ARS, Arctic Circle, 96930 Rovaniemi, Finland. So next December call Santa on amateur radio and tell him what you want for Christmas.

Jerry also has some equipment (Swan Mark II 2000 Watt Linear Amplifier; Tri-Ex W-25, 3 section 11-25 foot tower; Ezy-Way 40 ft. freestanding tower, and a Tri-Ex base for W-51 and W-25.). For details contact Jerry Starkey, WA6LJ, at (415) 964-6584 in Los Altos.

SPEAKER OF THE MONTH:

Fred Dietrich, NM6J, will discuss the "Poor Man's Homebuilt Spectrum Analyser". A lecture and demonstration will be given on general useage, building technique, and technical ideas on application. A spectrum analyser is an important tool; don't miss this month's meeting.

This article submitted by W6ANT and W6APZ from *T.E.S.O.L.* December, 1986 issue. For information on T.E.S.O.L. (Teachers of English to Speakers of Other Languages) contact W6ANT and W6APZ at (415) 494-0122.

Amateur Radio in the ESL Classroom

by George Kerasiotis
New York City Board of Education

The teacher of English as a second language (ESL) is faced with a difficult problem. How does he get English language students from ethnic communities out of their respective communities and make them aware of the fact that Brooklyn and the Lower Eastside are not the only places in America and that there are 49 other states outside of New York, complete with regional accents, speech patterns, and customs?

Unfortunately, the ESL teacher can not charter a jet and fly his students down South to practice English with our neighbors in the land of Dixie or to our friends in the Midwest, but if a teacher can not bring the classroom to other parts of America, why not bring other parts of America into the classroom?

That is exactly what Joe Fairclough and I did. We are both teachers in the New York City Board of Education System. Joe teaches ESL to 7th and 8th graders on the lower eastside of Manhattan, and I teach ESL for the Adult Basic Program at one of its sites in Brooklyn.

But we have more in common than teaching ESL; we are both amateur radio operators, better known as "hams." Not to be confused with CB radio, ham radio enthusiasts, licenced by the Federal Communications Commission, are able to talk to people all over the world.

I was inspired by Joe Fairclough who, with Board of Education approval, incorporated amateur radio into his curriculum several years ago. He teaches in a disadvantaged area where absenteeism is high and motivation is low, and ham radio is a way to keep his students interested and in school; on the other hand, I teach highly motivated adults who lack the opportunity and sometimes the confidence to get out of their ethnic communities and experience the American mainstream.

On May 22, 1986 Joe and I put our hobby to use in the ESL classroom. With radio gear set up in each classroom, one in Brooklyn and one in Manhattan, our students were able to

to converse confidently on the air. As it turned out, much more than English practice with native speakers was going on: an exciting cultural exchange was taking place. In one instance, one of my ESL students from Egypt was talking to a man in Youngstown, Ohio, and he asked him, "What's your favorite food?" The man replied, "Bacon and eggs." He then asked the student the same question, and the student from Egypt replied, "Falafel and shishkebab." Totally perplexed, the man from Ohio asked the student to describe those two Middle Eastern delights and there ensued a conversation which benefitted both the ESL student from Egypt and the American from Youngstown, Ohio.

This experiment with amateur radio in the ESL classroom has proven to be a valuable

teaching tool for me. It can do the seemingly impossible: it has brought the classroom out of its little corners in Brooklyn and Manhattan and has brought little corners of America and its people into the classroom.

About the author: In addition to teaching ESL, and being a ham radio operator, George Kerasiotis is an oil painter and recently had an exhibit of his paintings at the Betanah Gallery in Brooklyn. Other ESL "hams" may wish to write to him: 635 Eleventh Street, Brooklyn, NY 11215, U.S.A.

Briefly Noted

LANGUAGE OF THE AIR FORCE

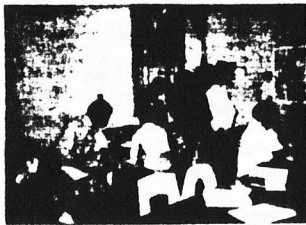
Publication of Francis Cartier's ESP text, *The Language of the Air Force in English*, has been discontinued by Regents Publishing Company. However, it is still being used, e.g., by foreign air force training programs. Requests for licensing to reproduce it should now be addressed to CASCommunicating, 1029 Forest Ave., Pacific Grove, CA 93850-4814.

Enhancement!

I hope you all are aware of the new FCC novice enhancement. The novice written test will be made somewhat more difficult, and the code will be kept at 5 w.p.m. The novices (and technicians) will now be granted some frequencies and modes which they have previously only been able to yearn for. Ten meter voice and data communications is now possible for novice and technicians (or as soon as the details are released). Novices will also get 220 MHz rights, all modes, and limited to 5 watts P.E.P. For more details, I suggest you check this month's *QST* and stay tuned for something in *PAARAGraphs* about the enhancement.

I also hope that more of our members would participate in the newsletter by contributing articles. The above mentioned enhancement is a fertile subject. How about some enlightening debate? Articles are due one week before the PAARA meeting (the first Friday of every month).

Thanks for your support--de KB6BPM.



George Kerasiotis (center) with Egyptian, Japanese and Hispanic students at the Dr. White Community Center in Brooklyn, New York, spring 1986.

communicate and practice English with each other via radio, thus linking the Adult Basic Program with the regular day school in a learning experiment which bridged the generation gap.

During the latter part of the experiment, several ham radio operators from different parts of the country participated with my students in Brooklyn. I had reviewed basic information questions such as "Where do you live?" and "What's your favorite TV show?" the day before so that the students would be able

THE PERHAM FOUNDATION SPONSORS:

SPECS REPEATER ASSOCIATION (SPECRSRA)

337 users with access to emergency telephone numbers. ARES affiliation.
7 Board members maintain 145.27, 220.36 and 440.80 Mhz. repeaters. All machines are open, with one minute timer. 2 & 440 machines at El Camino Hospital. 220 Machine above Foothills Park, Palo Alto. Info: Contact Jim, KT6W, 408-725-8128.

PALO ALTO AREA CHAPTER, AMERICAN RED CROSS

Provides worldwide amateur radio communications under agreement with National Red Cross. Active in HF, packet & BBS, ATV, Oscar, AmTOR and NASA satellite communications. Meets last Wednesday of the month. 7:30 PM Newsletter. ARES affiliation. Info: Ted, N611U, 415-322-2143 or Harry, KA6PLD, 415-941-5541.

ELECTRONIC MUSEUM AMATEUR RADIO CLUB (EMARC)

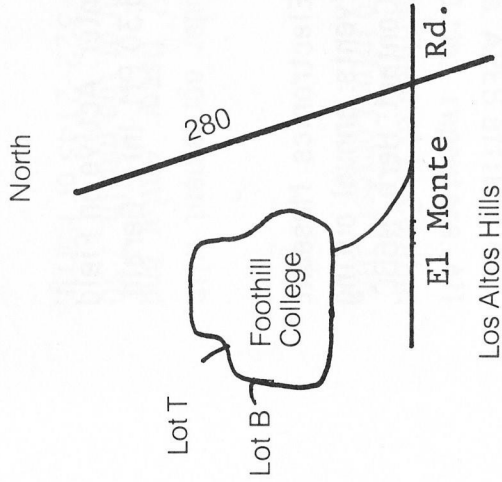
Novice classes. Meets at Foothill College, Electronics Museum, first Friday 7:30PM. Newsletter. Talk-in 145.27/R. Contact Bob, KB6FEC, 408-739-5546.

SOUTHERN PENINSULA EMERGENCY COMMUNICATIONS SYSTEM (SPECS)

Maintains cadre of amateurs to provide back up communications in time of

- **BUYERS FREE!!!** ● Support your local
- **Non-Profit Electronics Organization**
- **Refreshments Served!**
- **Novice thru Extra Exams Given, Info. 408-255-9000**

Locator Map:



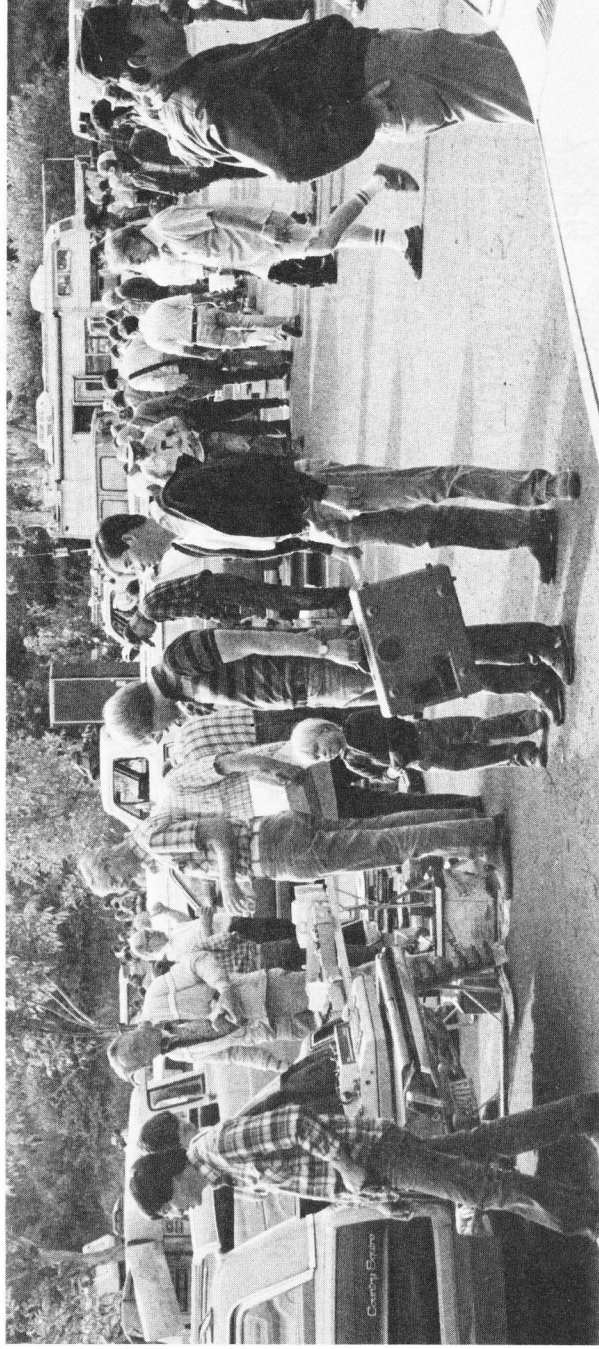
DATE/SPONSORED ORGANIZATION:

- March 14, 1987**
Southern Peninsula Emergency Communication System
- April 11, 1987**
Amateur's Donation to Palo Alto Red Cross
- May 9, 1987**
Electronic's Museum Amateur Radio Club
- June 13, 1987**
SPECS Users Group
- July 11, 1987**
Perham Foundation (Electronic's Museum Lot T)
- August 8, 1987**
Palo Alto Amateur Radio Association
- September 12, 1987**
Foothill's Amateur Radio Society

NEED MORE INFO?

Call Anytime on: 144.67/145.27 mhz ● SPECS Repeater

Presenting the Peninsula's Largest Electronic Flea Market at Foothill College!!



- Come to Foothill College, Los Altos Hills, California
- Saturdays 8 am - 2 pm ● Parking Lot "B"
- Sellers \$7.00 per vehicle (2 SPACES)

disaster. SPELLS Net, Mondays at 8 PM, 145.277R. Members receive newsletter, "T" shirt, name badge, helmet, roster. ARES affiliation. Contact Jim, KT6W 408-725-8128 for information package.

PERHAM FOUNDATION

Operates the Foothill Electronics Museum for Foothill College. Hosts FARS and EMARC club meetings. Sponsors all Electronic Flea Markets at Foothill College. Museum hours call Len, W6FKF, 415-960-4383

PALO ALTO AMATEUR RADIO ASSN. (PAARA)

Meets first Friday of month. Menlo Park Recreation Center. Active on Field Day. Newsletter. Net meets 147.45 simplex, Mondays 8:30 PM. Info: Gerald, W6GLNY, 415-326-4908.

FOOTHILLS AMATEUR RADIO SOCIETY (FARS)

Meets last Friday of the month. Foothill College, Electronics Museum. Talk-in 145.277R. Offers General/advanced classes. Events: annual outing to Mt. Tam, Field Day, 10 Meter contest. Newsletter. Contact: Herb, N6BC, 415-941-3794.

VEC EXAMINATIONS

Amateur radio exams. Cosde tests (20-5 WPM) 12 noon till 1 PM. Written tests 1 PM till 2 PM. Test location: Electronics Museum, Foothill College, 2nd Saturdays. Info: W6NLG, Gordon, 408-255-9000.

This is the second part of an article submitted by Robert Taylor, KA6NAN, reprinted with permission from *GATEWAY*, the ARRL's packet newsletter:

NETWORK MANAGEMENT: A GROWING NEED (PART II)

If they both transmit at the same time, only one can possibly be properly received by the digipeater. If both signals are of nearly the same strength at the digipeater, chances are that neither signal will be properly received. It is not always apparent that this is the mechanism causing the delays encountered during a connection, but it is nearly always so. TNCs are designed to defer their transmission if another packet signal is heard on frequency. The operative word here is *if*. Take the case of the mountaintop digipeater being used by stations on different sides of the mountain. Since they can't hear one another, they often will transmit at the same time. To each operator, the frequency seems clear, but to the digipeater there are two competing signals. Thus is a collision born.

Of course, on a multiple-digipeater path, the potential for collisions exists at the receiver of each digipeater along the path, as well as at the destination TNC. It is this increased collision rate that makes a multiple-digipeater path fail more readily than a single-digipeater path. It is my observation that most of the problems encountered are with collisions between a digipeater transmission and that of another station, either another digipeater or home station. (This observation is based on what signals I can see from my location, not on hard statistical evidence.)

One way of reducing the number of collisions is to move the digipeaters to separate frequencies, much as is done with voice repeaters. The problem is that, since the digipeaters could no longer hear one another, doing so would eliminate the multiple-digipeater paths that have become such an integral part of packet radio. There are technical solutions to this loss of linking. The principal one is the use of multiple-port digipeaters. Such machines have two ports that operate independently, one on the local-user frequency and one on the linking frequency. As the name implies, the local-user frequency is the frequency on which local stations communicate with the digipeater. The linking frequency is used strictly to communicate with other digipeaters. Multiple-port digipeaters exist today and are being operated in a number of locations throughout the country. Nonetheless, present-day packet radio operates mostly through the use of single-port machines.

The third and final section of this article by Jon Bloom, KE3Z, will appear in next month's issue. --de KB6BPM.

WORLDWIDE DISTRIBUTION

NEW OAKLAND LOCATION



HAM RADIO OUTLET

6 STORE BUYING POWER

ICOM IC-R71A

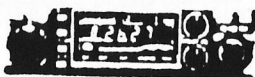


Superior Grade General Coverage Receiver

\$799

SALE! CALL FOR PRICE

ICOM IC-37A



IC-27A (2700-28.6 Freq)

IC-27H (4000-28.6 Freq)

IC-37A (2700-28.6MHz Freq)

IC-47A (2700-70cm Freq)

CALL FOR LOW, LOW PRICE

ICOM IC-735



The Latest in ICOM's Long Line of HF Transceivers

CALL FOR LOW, LOW PRICE

ICOM IC-R7000

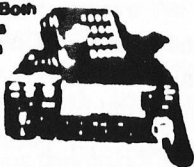


25 MHz-1300 MHz

IN STOCK FOR IMMEDIATE DELIVERY!

ICOM LATEST EDITION IC-3200A DUAL BANDER

Covers Both 2 Meters & 70 cm



AT GREAT LOW, LOW PRICES

ICOM IC-1271A

NEW



1.2 GHz Transceiver
The First Full-featured
1240-1300 MHz Transceiver

AT GREAT LOW, LOW PRICES

ICOM HAND-HELDS



IC-02AT
IC-04AT

VHF/UHF



IC-2AT
IC-4AT



IC-3AT

CALL FOR LOW, LOW PRICE

All Major Brands in Stock Now!



Bob Ferraro W0RQ
President
434 Anthony W0RQ
VP for Larry Orr
Arlene in Mgr

ANAHEIM, CA 92801
7020 W. La Palma
(714) 781-3033 (213) 680-2840
Eaton Donovano & Anne Barry Ford

BURLINGAME, CA 94010
909 Howard Ave
(415) 342-5757 George Mgr W0SDBV
5 miles south on 101 from SFO

OAKLAND, CA 94608
2210 Livingston St
(415) 534-5757 Don Mgr W0SPE
 Hwy 17 to 7th Ave East

SAN DIEGO, CA 92128
3375 Reentry Vista Rd
(619) 580-4800 Glenn Mgr W0SBA
 Hwy 17 & Coronado to 16th St

PHOENIX, AZ 85013
1702 W. Camelback Rd
(602) 742-3515 Bob Mgr W0RDM
 Sun or Hwy 17

VAN NUYS, CA 91401
6705 Sepulveda Blvd
(818) 888-2212 Al Mgr W0VRA
 San Diego Hwy on Victory Blvd

FREE SHIPMENT
on orders over \$100

CALL TOLL FREE (800) 854-6046

Not valid including Alaska & Hawaii. Hours: 9:30 a.m. to 5:30 p.m. Pacific Time. California and Arizona customers call or visit nearest store. California and Arizona customers please add sales tax. Prices, specifications, descriptions subject to change without notice.



COMPLETE HAM RADIO DEPARTMENT

NOW AVAILABLE
LARSEN 2/70

Dual Band Amateur Mobile

ANTENNAS

2 Meter or 440 MHz

- Maintains High Performance For Both VHF And UHF Amateur Bands!
- Self Resonant Design Allows Most Applications For Boats And Base Stations.



Ritron "Jobcom" Series COMMERCIAL 2-WAY RADIOS

For "In-Plant" or "On-Site" Applications

Handheld Units From

\$195

Total Commercial Series "Person-to-Person"



Most Add-On Accessories In Stock!

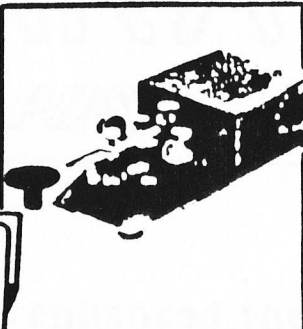
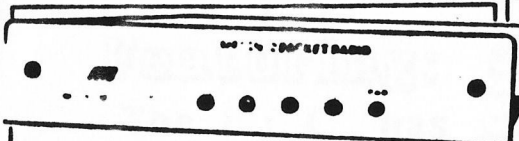
Affordable!

PACKET RADIO FROM MFJ

\$129⁹⁵

MODEL MF1270

- Identical TAPR TRC 2 Clone in New Cabinet With TTL Serial Port. Totally General Purpose
- Latest AX.25 Version 2.0 Software. 16 K RAM



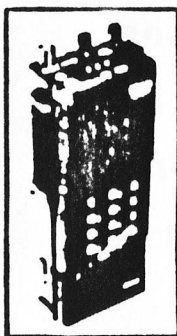
NYE Viking CODE PRACTICE SET!

Special Reg. #27

\$2195

#404-082

- Uses NYE Viking Standard Key, Oscillator And Amplifier



ICOM IC-2A (T) HANDHELD

\$269⁵⁰

Extremely Compact, With Excellent Audio Quality!

- 800 Channels Transmit And Receive.
- Separate Speaker & Built-in Mic. • Synthesized
- Complete With BP3 NiCd Pak And AC Wall Charger

TELEX HY-GAIN ANTENNAS



MODEL CPC-2A
COLLINEAR
GROUND
PLAIN FOR
2 METERS
\$36.00

\$139.95

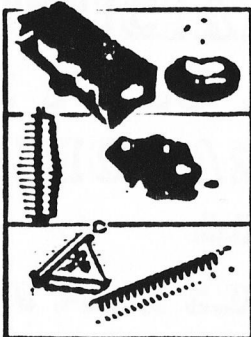
MODEL AR40
FOR LARGE
PM TV AND
COMPACT
COMMUNIC-
ATION
ANTENNA
ARRAYS



Thousands of
**COMMUNICATIONS
PARTS AND
ACCESSORIES!**

In Stock Today And
Ready to Fill Any
Communications Need!

Qualified Staff To
ASSIST YOU!



QUEMENT ELECTRONICS
1000 South Bascom Avenue
San Jose • 888-5800



Since
1933

AMERICAN EXPRESS

OPEN MON.- SAT. 9AM TO 6PM

Easy Wheel Chair Access

PARA
P.O. Box 911
Menlo Park
Ca. 94026

FIRST CLASS