

U.S. POSTAGE PAID
PERMIT no. 320
MENLO PARK, CA. 94025

TO:

RETURN REQUESTED:
PAARA P.O. BOX 911
MENLO PARK, CA. 94025

Andy Korsak VE3FZK/W6
504 Lakemead Way
Redwood City CA 94062



vol. 26
JULY 1983

PAARA

GRAPHS



palo alto
AMATEUR
RADIO ASSN.

MENLO PARK C.D. RADIO CLUB, K6YQT

 PAARAGRAPHS is the official organ of
 The Palo Alto Amateur Radio Association & the Menlo Park Civil Defence Radio Club

1983 CLUB OFFICERS

President : Gerry Tucker WA6LNV 326-4908
 Vice-President : Cliff Keely KA6JWA 364-4968
 Secretary : Gerry Wagstaffe W6NIR 325-4670
 Treasurer : George Nixon GI3OEN 854-6445
 Trustee, K6OTX : Fred Canham K6YT 948-9238
 Property : Ed Fairbanks W6AIN 322-0319
 Co-Property : Fred Canham K6YT 948-9238
 ARES Officer : Steve Stuntz K6FS 322-4952
 Club Historian : Jerry Zobel W6ARA 322-0063
 Badges : Fred Canham K6YT 948-9238
 Field Day-gen'l: Fred Canham K6YT 948-9238
 Field Day-CW : Cam Pierce
 Field Day-phone: Bob Wheeler
 Club nets : 147.45 MHZ, Monday 8:30 pm L.T. & 14.287 MHZ, Monday 9:00 pm L.T.

BOARD OF DIRECTORS

Chairman: Gerry Tucker WA6LNV
 Members : Ed Fairbanks W6AIN
 : Kevin Lapp WA6FAC
 : Wally Porter K6URO
 : Bill
 : McElhinney KA6LZI
 : John
 : Buonocore KD6ZL
 : Les Vickery W6AKR
 : Alan Larsen WA6AZP
 : Jack
 : McEnnerney W6LII

PAARA POLICIES

Membership in PAARA is \$6.00 per calendar year (payable in January), which membership includes a subscription to PAARagraphs. Freebee distribution to those who indicate an interest in the Club, and as an inducement to their becoming members, and is subject to change with changing interests in the Club. Make payment to: PAARA, P.O. Box 911, Menlo Park, CA 94025.

PAARAGRAPHS STAFF

Editor : George Nixon GI3OEN
 Advert. : Swede Swenson N6CHL
 Mailing : Bill
 : McElhinney KA6LZI
 Cover : Sue Lindner LØVLY

Written contributions to the P.O. Box above, or to the Editor, 1140 Sherman Avenue, Menlo Park, CA 94025, tel. no. 854-6445. Deadline is two or three days after the Board of Directors meeting.

Friday, July 8, 1983

7:30 pm

R E G U L A R M E E T I N G

FIELD DAY DEBRIEFING

by

Fred Canham, K6YT, and others

Movies, slides, debriefing, etc. of the World Famous PAARA Field Day team. An anonymously documented clandestine photo essay (of what? - Ed. Only Gerry Tucker knows!)

Meeting to be held at the Menlo Park Recreation Centre, Alma at Mielke, Menlo Park. Future meetings: August 5, September 9?

Circle the Date

July 8, 1983

PRESIDENT'S CORNER: By the time you read this, Field Day will once again be history. Whatever the results, I'm sure it will have been worth the effort - sunburn and all. Did the generator stall in the middle of the night again? Did the 80 metre dipole, strung across the jetties, stay up during the usual 5:00 o'clock blow? Did the novices collect any points? My guess is that we will have had a miracle finish and win by less than 100 points!

I snuck out of the President's Corner last month, so I'm a little behind on some items. Last month, Clif, KA6JWA, lined up the Western Regional Sales Manager of Rohn Towers to give us an excellent presentation. (Thanks to both.) Gene Francis works out of his office in Hollister, which makes him pretty accessible to us. If you have tower questions, call Gene for he is anxious to help.

The month before last, Les, W6AKR, gave us a run-down on a recent trip he took through the Southwest, which included a few shots of the Very Large Array in New Mexico. Since then I have seen several references to the V.L.A., most recently on the Carl Sagan hour.

This issue will reach you before the July 9 Picnic! Plan on being there. These picnics are always great fun and it's a shame more people don't show up for them. What better way to spend 3-4 hours drinking free beer and soda, and grilling a hot dog over PAARA charcoal. I'll bring a few extra dogs so if you get a sudden urge to show up, one of them is yours. We will have door prizes, goodies, etc. (Drawing is at 2:00 pm, all free!)

P.S. Don't forget the Pacific Division Convention in Reno on August 19-21.

Paul, N6TX, will continue the saga of "The Rise and Fall of a 5 Metre Dish," a Life History.

de Gerry Tucker, WA6LNV.

5-STORE BUYING POWER

Fast shipment popular items from huge stocks!
And 5 to 1 odds (your favor) that scarcer items are
available within multi-store complex. Quantity buying
means top discounts, best prices. Call us first!

HAM RADIO OUTLET™

 **KENWOOD**

 **ICOM**

 **YAESU** •  **DRAKE** • **MIRAGE**

 **Rockwell**  **Collins** • **TELEX** *hy-gain*

ETD ALPHA • KLM

AEA • ALLIANCE • ALPHA • AMECO • AMPHENOL • ARRL • ASTRON
• AVANTI • BENCHER • BERK TEK • BIRD • B&W • CALLBOOK • CDE
• COLLINS • CURIC • CURTIS • CUSHCRAFT • DAIWA • DATONG
• DENTRON • DRAKE • DX ENGINEERING • EIMAC • HUSTLER

• HY-GAIN • ICOM • J. W. MILLER • KENWOOD • KLM • LARSEN
• LUNAR • METZ • MFJ • MICRO • LOG • MINI-PRODUCTS
• MIRAGE • NYE • PALOMAR • ROBOT • ROHN • SHURE • SWAN
• TELEX • TELREX • TEMPO • TEN-TEC • TRISTAO • VOCOM • YAESU
and many more!



OVER-THE-COUNTER, 10AM to 5:30PM.
MONDAY THROUGH SATURDAY



BURLINGAME, CA 94010

899 Howard Ave., (415) 342-5757
5 miles south on 101 from S F Airport

OAKLAND, CA 94609

2811 Telegraph Ave., (415) 451-5757
Hwy 24 Downtown. Left 27th off-ramp

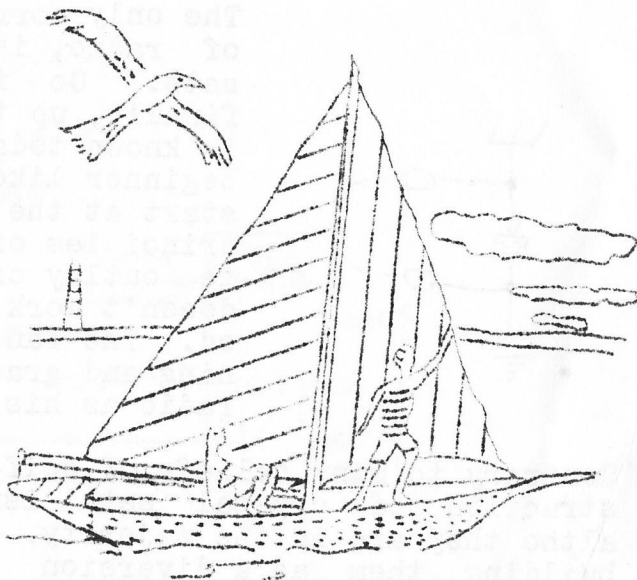
ANAHEIM, CA

SAN DIEGO, CA

VAN NUYS, CA

LETTER FROM JERRY STARKEY,
WA6LIJ:

Jerry, W6GSJ, and Nancy, KA6CQS, Borucki will be cruising to Hawaii in their 29 foot sailing boat, "Wandering Star" about July 2 and returning about Oct. 1, 1983. Their planned voyage to Hawaii will be spent cruising the Hawaiian Islands. The return trip to San Francisco will take 25 to 30 days ending about Oct. 1, 1983.



The Boruckis will have a FT301D with a 16 foot vertical antenna on board. Generally the Boruckis plan to keep in touch with friends and amateurs in the South Bay area on 15 and 20 metres SSB. They would appreciate Bay Area hams who could follow their voyage, pass along weather information or just say ahoy to two fun-loving mariners.

Jerry Starkey, WA6LIJ, will coordinate frequencies and times via the SPECS Net and the PAARA Net.

Jerry and Nancy will make a 16mm movie of their voyage with a spot featuring communication with Bay area radio amateurs.

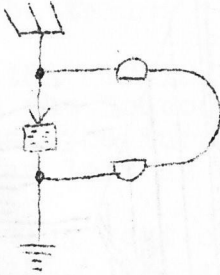
C U on 15 and 20 with Jerry and Nancy.

de Jerry Starkey, WA6LIJ.

LETTER FROM WALLY PORTER, K6URO:

(Wally enclosed two simple receiver construction articles in his letter and suggested that they might be of interest to

The only correct way to start any branch of radio, is by making a few crystal sets. Go from there to l-tubers, and finally, up to communication sets as it is known today. Nothing discourages the beginner like over optimism that he can start at the top, without knowing the principles of radio. Then, after a large outlay of money and his "monster" doesn't work - he may quit radio for good. The fan, who starts at the beginning and gradually works up, will accept radio as his lifelong hobby.

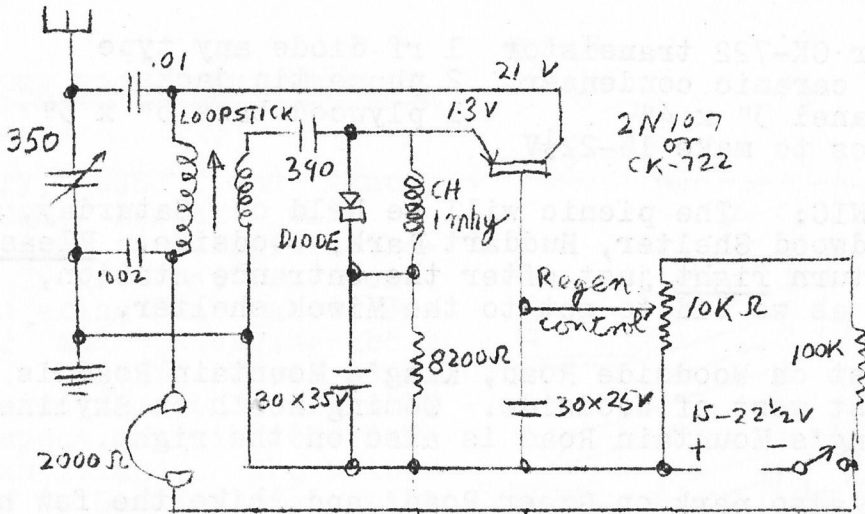


Contrary to many beliefs of self-styled "experts", the construction of crystal sets isn't confined to youngsters, altho they are in the majority. Many professional men are building them as a diversion from their more complicated vocations. It is possible to spend one's lifetime in this inexpensive and interesting field, and always find something more to learn. Crystal set conditions are more favorable now with better circuits, more powerful transmitters, and lower priced parts, than when they were considered dependable receivers prior to 1921.

From here on, you may branch out into larger sets, Amateur Radio, repairing, operating, research, engineering, writing, teaching, or any branch you desire. But to start anything, be sure to start at the beginning, and the rest comes easier.

An Efficient Regenerative Transistor Receiver: The tuning coil is a modified Loopstick which is responsible for easy oscillation, due to its Hi-Q. It oscillates easily thru the entire broadcast band.

To modify the Loopstick, first remove the cardboard sleeve that is on some of them. Also the pc. of wire used for Aerial. Take off 5 turns from the winding so you can get the HF stations better. Push the iron core in so it extends the same on each end. Wind 7 turns #22 DCC over the entire



winding.

If you want to make a 1 mhy. RF choke, wind 40 ft. #36 enamel on wooden dowel. This should read about 17 ohms DC resistance or approximate. Just scramble-wind it on the form.

Values are not too critical. As it often happens, some values work better with certain transistors. The 2N107 has less background noise - but here again, it may be the transistor.

The RFC is used to build up inductance around the diode. It has been suggested by Bart McMurray, that an RF transistor will oscillate even better than the 2N107. Try a CK-721, CK-768, or 2N135 type. (Wally notes that the above RX was used to practice receiving code by 25 members of the Wilbur Radio Club, 20 of whom went on to get their licence.)

Parts List:

- | | |
|------------------------------|---------------------------|
| 1 .00035 variable condenser | 1 standard loopstick |
| 1 .01 bypass condenser | 1 1 mhy. RF choke |
| 2 1/2w resistors 8.2K & 100K | 1 .002 mica condenser |
| 1 10K vol. control & switch | 1 1 1/4" bar knob & scale |
| 2 30mfd. X 25V midget cond. | 1 tin shield for panel |

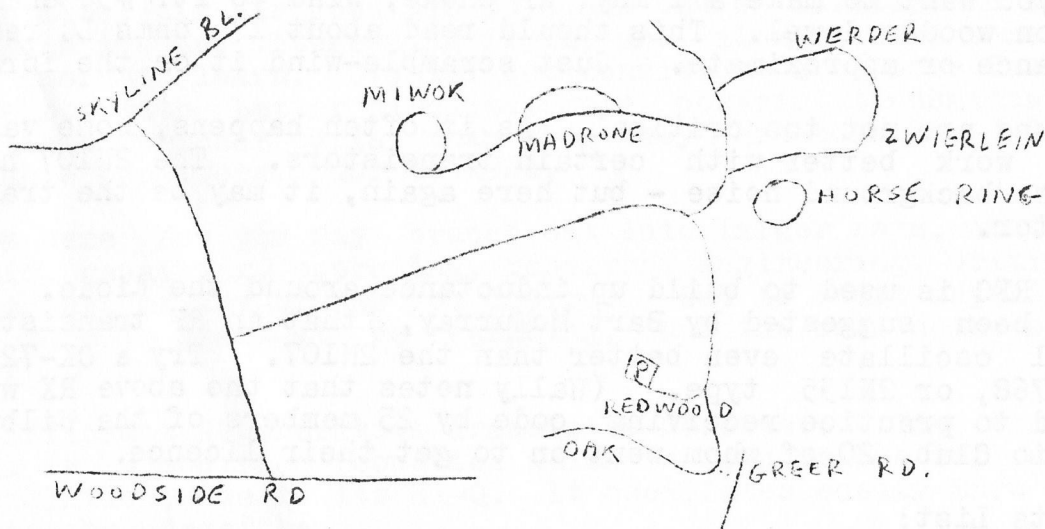
1 2N107 or CK-722 transistor 1 rf diode any type
1 390mmfd ceramic condenser 2 phone tip jacks
1 compo panel 3" x 4" 1 plywood base 3" x 3"
batteries to make 15-22½V

PAARA PICNIC: The picnic will be held on Saturday, July 9 at the Redwood Shelter, Huddart Park, Woodside. Please note that you turn right just after the entrance station, rather than left as we did to get to the Miwok shelter.

Coming west on Woodside Road, King's Mountain Road is on the right, just west of Woodside. Coming north on Skyline Boulevard, King's Mountain Road is also on the right.

You could also park on Greer Road and hike the few hundred yards along a trail to the Redwood Shelter.

Bring a friend (or an XYL) and have a good time!



FIELD DAY SPECIAL REPORT:

WE GAVE IT OUR BEST SHOT

AND.....

WE CAME UP WITH A TRE-MEND-OUS SCORE!

6,200 QSO'S VERSUS 5,315 LAST YEAR.

Preliminary Field Day results from Fred Canham, K6YT, are as follows: QSO's (before removing duplicates) 6,200 versus 5,315 for 1982; and 5,129 for 1981.

| | Novice | CW | SSB |
|-----|------------|-------------|-------------|
| 2m | | | 106 |
| 10m | | 15 | |
| 15m | 4 | 557 | 1524 |
| 20m | | 787 | 1780 |
| 40m | 59 | 344 | 708 |
| 80m | 52 | 64 | 76 |
| | <u>115</u> | <u>1752</u> | <u>4333</u> |

K6YA, our friendly rivals at the Foothill Amateur Radio Society, who entered Field Day in the 5A class this year, made about 5,200 QSO's.

Extrapolating from last year's final score, we expect a final 1983 score of about 16,000 points, THAT'S RIGHT - SIXTEEN THOUSAND POINTS!

A big feature of this year, Fred said, was that the Novice station was on the air or was capable of going on the air for the whole contest. The Explorer Scouts and Mark, KA6 RMA, manned the Novice station.

A minor disaster struck when the bottom section of the 40m tower buckled as it was being set up; however, Fred and crew used the undamaged 30 feet of tower to support the 40m beam for the duration of Field Day.

Ionospheric conditions were good throughout Field Day; 15m was open to 10pm, and 20m was usable for almost all of the time.

The satellite station made 13 QSO's, all on the Russian satellites RS6 and RS8.

Swede Swenson, N6CHL, got press publicity with an article in the Menlo Recorder.

For more on PAARA's Field Day, see next month's PAARAGRAPHS.

.....

Your Editor, ie. myself, and my XYL, Frances, went to Europe for four weeks in May/June. We spent three weeks in Northern Ireland visiting my mother, who is hospitalized, and one week visiting Copenhagen, in Denmark. Several people have asked about my mother's health; and I thank them for their concern. My mother suffered several strokes resulting in paralysis of her left side, and she is now permanently hospitalized in Northern Ireland.

Almost twenty years ago, your Editor lived and worked in a suburb of Copenhagen, Vanløse, in an electronics factory, and as a belated tenth wedding anniversary trip, Frances and I went to Copenhagen for a week.

Copenhagen is the most beautiful city in the world, I think, and the people there are the most friendly people in the world. The people are all well-dressed and the shops are full of good merchandise. Tivoli Gardens with its restaurants, amusements, concerts, pantomime, bandstands, fashion shows, and flowered walks is beautiful. At some point, when there is a lack of contributed material for PAARAGRAPHS, I will write an article on Copenhagen for any potential tourists in PAARA.

There were some American tourists in Copenhagen; I overheard two talking near the statue of the Little Mermaid, Den Lille Havfrue. One American said to the other: "I pulled the chain and it sounded just like Archie Bunker's toilet." It reminded me, somehow, of some nets that I used to check into!

SHAVER RADIO, INC.

(408) 998-1103

1378 S. BASCOM AVE. SAN JOSE, CALIF.

CELEBRATES ANOTHER

FIRST!

**DRAKE
SWAN
COLLINS**

**YAESU
KENWOOD
TEN-TEC**

**HF TRANSCEIVERS
AT
DEALER COST!**

WITH ANY PURCHASE OF \$100 MIN.

NEW, SEALED, FULL WARRANTY



Quement offers

The Pro-Mark™ KWM-380

Special!



COLLINS SUGGESTED PRICE IS \$4996.00

NOW

\$2995.00



Rockwell
International

OUR SPECIAL PRICE INCLUDES: ALL SERVICE BULLETINS
INSTALLED, INCLUDING WARC BANDS.

MANY OPTIONS ALSO AVAILABLE

CALL FOR MORE COMPLETE DETAILS
ON THIS SPECIAL OFFER!



QUEMENT ELECTRONICS

1000 SO. BASCOM AVE.
SAN JOSE
Phone 998-5900



MasterCard

